

# CURRENT SENSOR

---

PRODUCT SERIES: STB-300LA/M

PRODUCT PART NUMBER: STB-300LA/M

VERSION: Ver1.4



Sinomags Technology Co., Ltd.

Web site: [www.sinomags.com](http://www.sinomags.com)

## CONTENT

1.	Description .....	2
2.	Electrical parameters (STB-300LA/M) .....	3
3.	Typical application circuits .....	4
4.	Dimensions: STB-300LA/M .....	5
5.	PCB footprint (STB-300LA/M) .....	6
6.	Revision History .....	7

## 1. Description

STB-300LA/M series current sensors are based on close loop principle with TMR technology. The sensor can detect the current with DC, AC, pulse and irregular wave shape.

### Typical application

- Solar inverter
- Direct-current dynamo
- Uninterruptible Power Supplies (UPS)
- Switched model power supplies (SMPS)
- Variable frequency converter

### General parameters

Parameter	Symbol	Unit	Value	Remark
Working temperature	T_A	°C	-40 ~ 105	105°C, I <sub>max</sub> =530A
Storage temperature	T_stg	°C	-40 ~ 105	
Mass	m	g	115	STB-300LA/M

### Absolute parameters

Parameters	Symbol	Unit	Value
Supply voltage	V <sub>cc_max</sub>	V	6
Maximum primary current	I <sub>p_max</sub>	A	10*I <sub>pn</sub>
ESD rating (HBM)	U_ESD_HBM	kV	4
High temperature and humidity	T_HAST	-	85°C&85%RH (1000h)

Remark: the unrecoverable damage may occur when the product works on the conditions over the absolute maximum ratings. Long-time working on the absolute maximum ratings may cause the degradation on performance and reliability.

### Isolation parameters

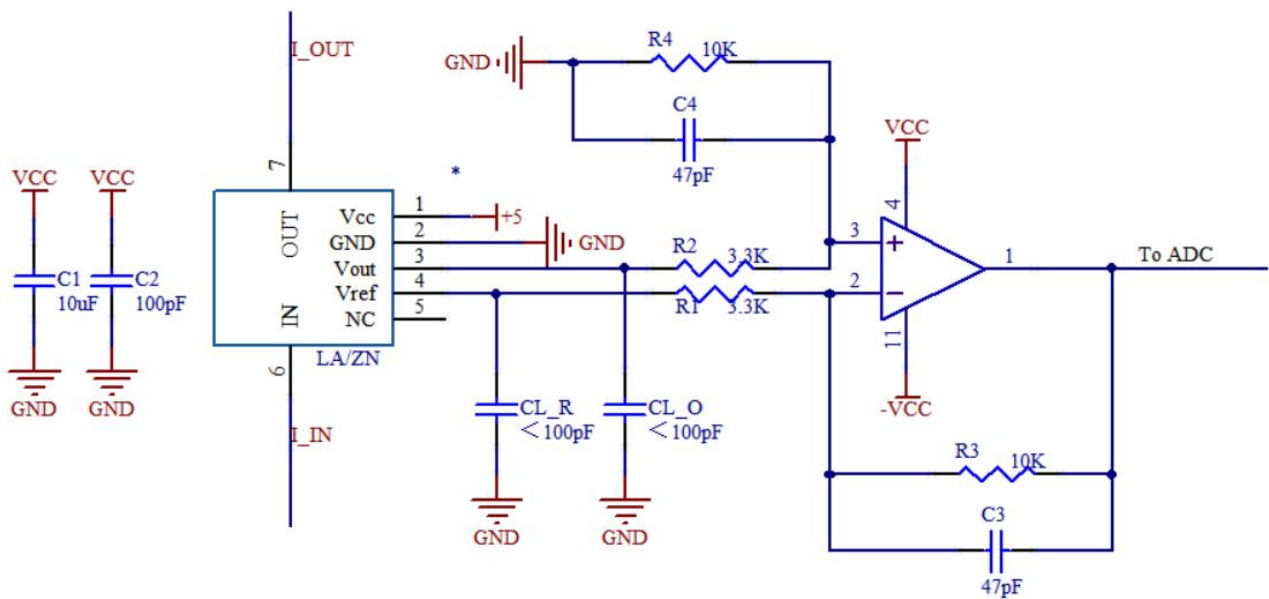
Parameter	Symbol	Unit	Value	Remark
RMS voltage for AC test 50Hz/1 min	U <sub>d</sub>	kV	4	
Impulse withstand voltage 1.2/50μs	Ū <sub>w</sub>	kV	8	
Case material			V0	According to UL 94
Comparative tracking index	CTI	V	600	

## 2. Electrical parameters (STB-300LA/M)

Condition: Vcc = 5.0 V, RL = 10 kΩ, T A = 25°C, unless specified.

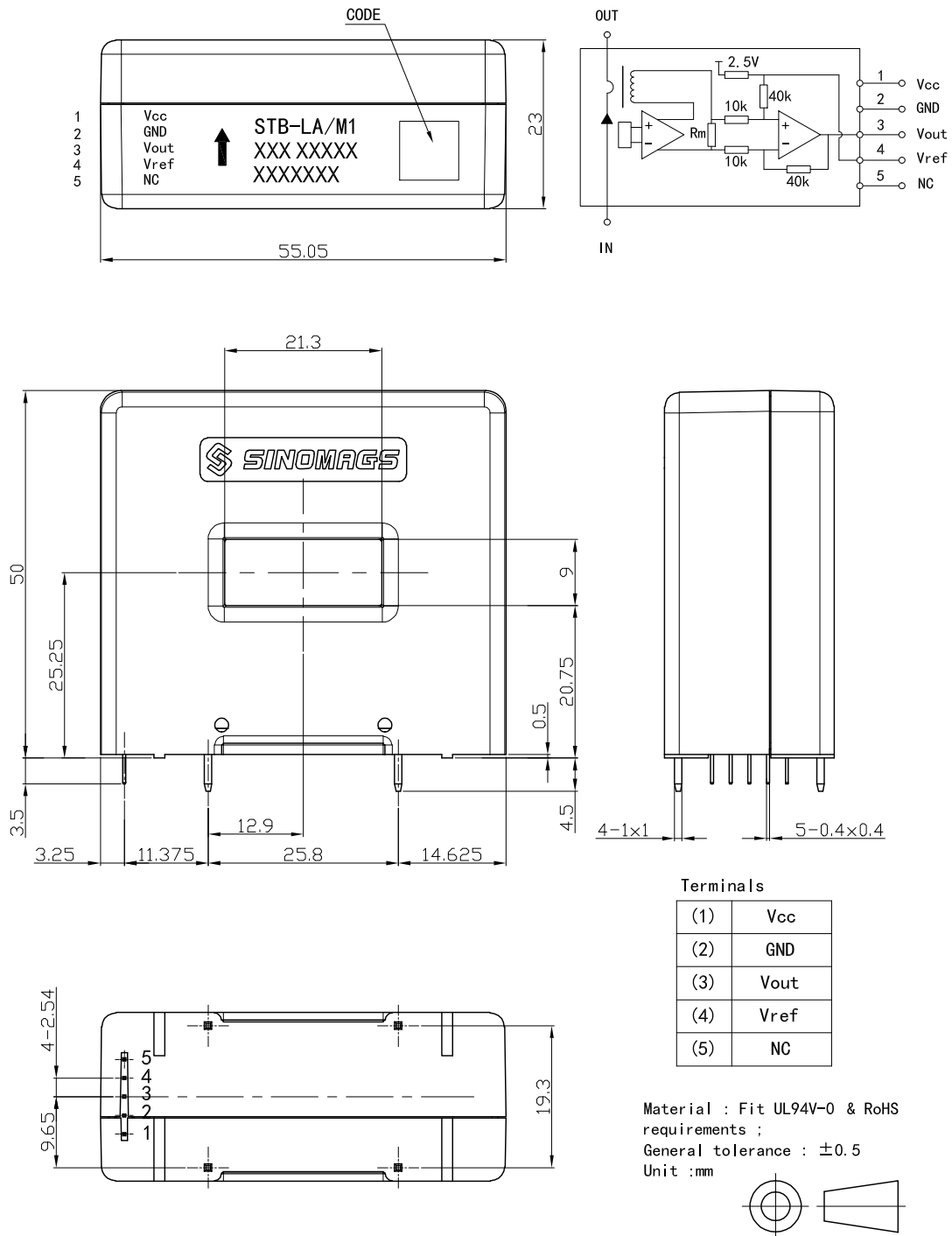
Parameters	Symb ol	Unit	Min.	Typ.	Max.	Remark
Primary nominal rms current	I <sub>pn</sub>	A		300		
Primary current measuring range	I <sub>pm</sub>	A	-600		600	
Supply voltage	V <sub>cc</sub>	V	4.75	5	5.25	
Consumption current	I <sub>c</sub>	mA	10 + I <sub>p</sub> /NS*1000			NS = 1875
Reference voltage	V <sub>ref</sub>	V	2.48	2.5	2.52	
Electrical offset voltage	V <sub>oe</sub>	mV		5		100 % tested (V <sub>out</sub> – V <sub>ref</sub> )@ 0 A
Magnetic offset current	I <sub>om</sub>	mA	100		100	@6*I <sub>pn</sub>
Full-scale voltage	V <sub>fs</sub>	V		± 0.9375		(V <sub>out</sub> – V <sub>ref</sub> )@ I <sub>pn</sub>
Theoretical sensitivity	G <sub>th</sub>	mV/ A		3.125		0.9375 V @ I <sub>pn</sub>
Sensitivity error	G <sub>err</sub>	% of I <sub>pn</sub>	-0.8		0.8	
Linearity error within I <sub>pn</sub>	ξ <sub>L</sub>	% of I <sub>pn</sub>	-0.15		0.15	@25°C
Reaction time @ 10 % of I <sub>p</sub>	t <sub>ra</sub>	μs		0.6		
Step response time @ 90 % of I <sub>p</sub>	t <sub>r</sub>	μs		0.6		
-3 dB band width	BW	kHz		300		
Noise	V <sub>noise</sub>	mV pp				
DC ~ 10 kHz				5		
DC ~ 100 kHz				6		
Accuracy @ 25°C	X	% of I <sub>pn</sub>	-0.8		0.8	
Accuracy @ 85 °C	X <sub>TR</sub> ange	% of I <sub>pn</sub>	-1.1		1.1	
Vout Capacitive Load	CL <sub>O</sub>	pF	0		100	
Vref Capacitive Load	CL <sub>R</sub>	pF	0		100	

### 3. Typical application circuits

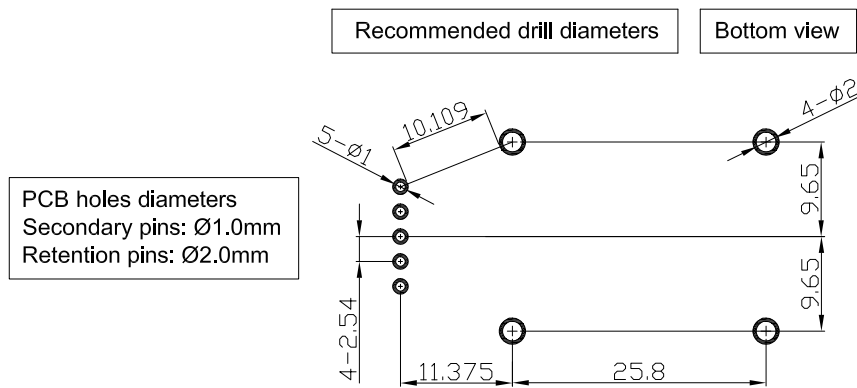


Typical application circuits for STB-LA current sensor. The magnification can be estimated as  $M = R4 / R2$  with the condition of  $R1 = R2$ , and  $R3 = R4$ . The magnification in the circuit above is around 3. The capacitive load of Vout and Vref should not exceed 100pF to avoid oscillations.

### 4. Dimensions: STB-300LA/M



## 5. PCB footprint (STB-300LA/M)



### Assembly on PCB

- Recommended PCB hole diameter: 1 mm for secondary pins, 2 mm for retention pin.
- Maximum PCB thickness: 2.4 mm (can be customized per request).
- Wave soldering profile: maximum  $260^{\circ}\text{C}$  for 10 seconds.